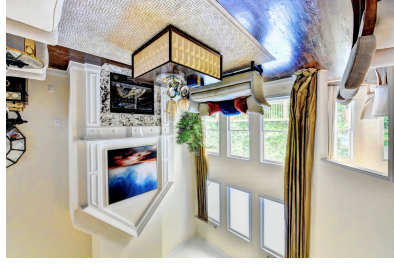


5865 North point Pkwy, #150  
 Alpharetta, GA  
 Ph: (678)591-7755  
 (678)620-8900  
 Email: zia.rahman75@gmail.com  
 pm.ccvh@gmail.com

A Division of Capital City View Homes  
**WHISPER**  
**WOODS HOMES**



Residential | New Construction | Lot & Land  
 Commercial

e AmberRogersATL@gmail.com

Amber Rogers REALTOR®  
 PalmerHouse Properties  
 c | 404.348.3466

**PALMERHOUSE**  
 PROPERTIES

Estates at Woodlawn is a Whisper Woods Homes community with 5 custom homes located in Marietta, Georgia. Located on Divine Ct NE, Estates at Woodlawn is a million dollar community having street and driveways paved with permeable pavers and an 8 feet high privacy fence. Estates at Woodlawn is a private neighborhood in East Cobb, located in the Sope Creek Elementary, Dickerson Middle and Walton High School district. We offer Customized floor plans with basement, master on the main, commodious secondary bedrooms and a media room. These are contemporary homes with a coherent transitions between the indoor and outdoor space. The lawn maintenance and garbage pickup cost is covered by the communities HOA.

## ESTATES AT WOODLAWN





## Amenities Nearby

The location of Estates at Woodlawn is one of its greatest assets.

From home you'll have almost any dining, shopping and entertainment you desire are your fingertips.

**PERIMETER MALL**  
Shopping, Dining & More - 6 mi

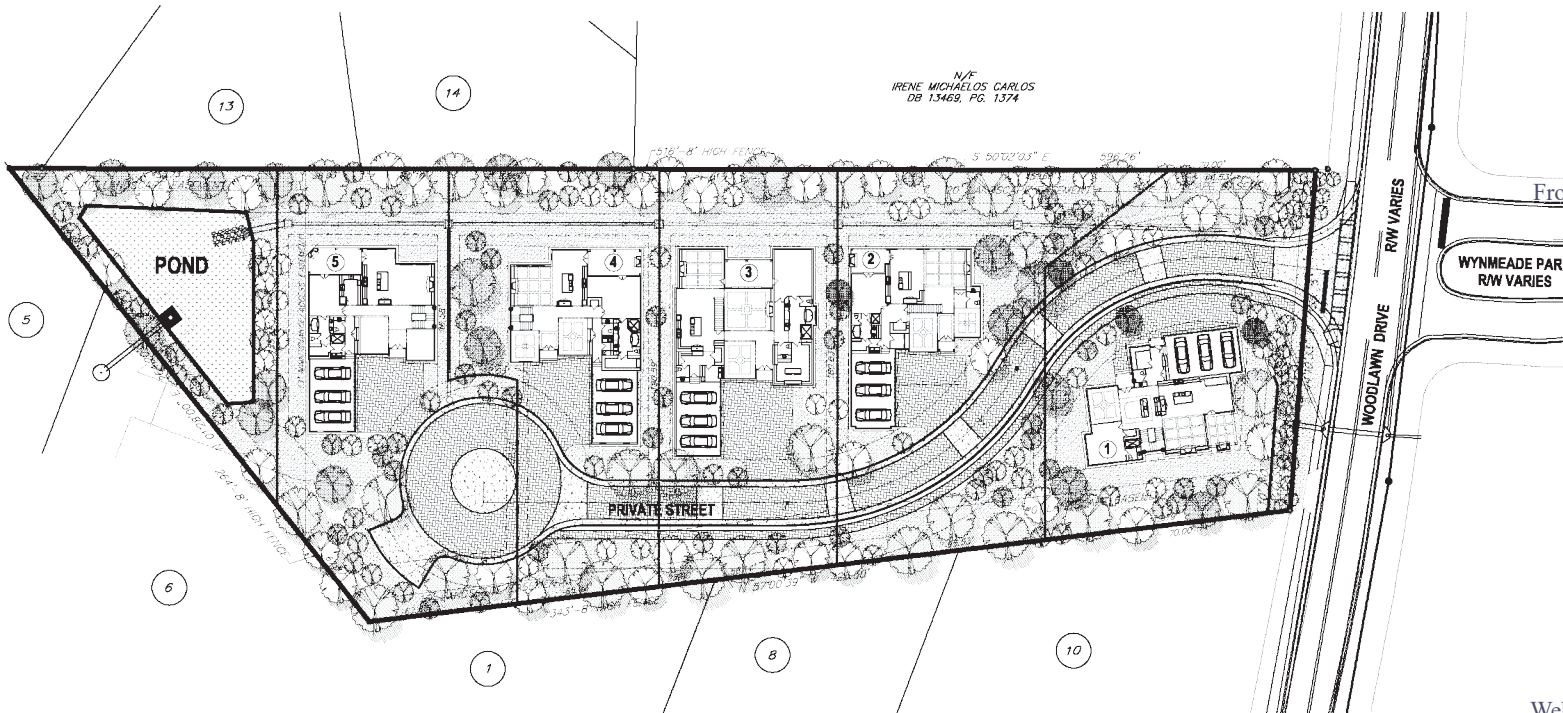
**GROCERY STORE**  
KROGER - 1.4 mi

**CHATTAHOOCHEE NATIONAL**  
Recreation Area - 1.7 mi

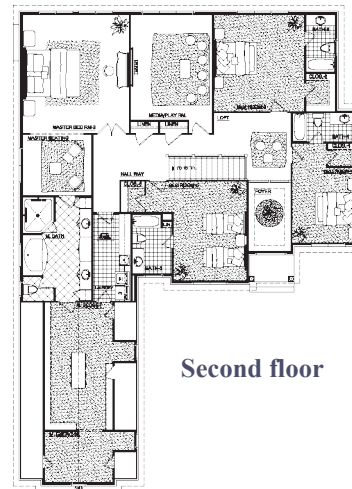
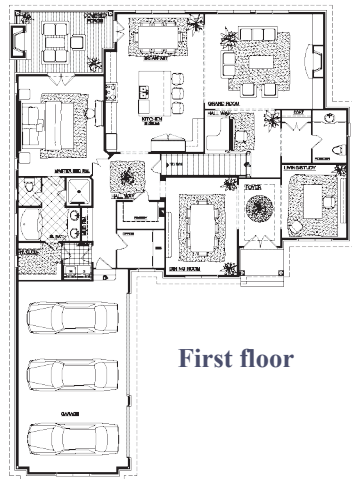
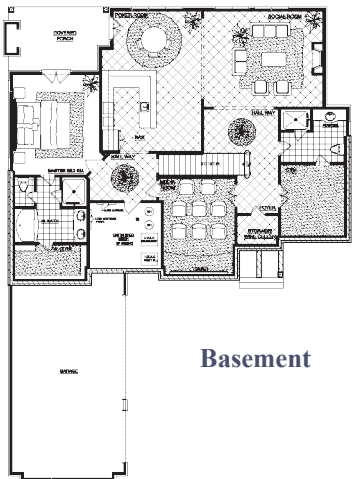
**STARBUCKS**  
Coffee Shop - 0.9 mi

**NORTH SPRINGS MARTA STATION**  
Public Transport - 6 mi

Website: [whisperwoodshomes.com](http://whisperwoodshomes.com) / Estates at Woodlawn



## Available Plans For Lot-2



## Our Partners

LDP DESIGN GROUP, INC.



PALMERHOUSE  
PROPERTIES®

